



project part-financed by the European Union



UNDERSTAND

European regions UNDER way towards STANDard indicators for benchmarking information society

UNDERSTAND partners framework data

Author(s): RER

Issue Date: April 2004

Version: Final

Status (public – restricted): Public

NUTS level

Country	NUTS 1	NUTS 2	NUTS 3
Germany	Hessen	Darmstadt	
		Giesen	
		Kassel	
Spain	Este	Cataluna	
		Comunidad Valenciana	
		Illes Balears	
France	Sud-Ouest	Aquitaine	
		Midi-Pyrenees	
		Limousin	
Italy	Nord-Ovest	Piemonte	
		Valle d'Aosta	
		Liguria	
		Lombardia	
	Nord-Est	Trentino Alto Adige	
		Veneto	
		Friuli Venezia Giulia	
		Emilia-Romagna	
Sweden	Sweden	Mellersta Norrland	Vasternorrlands lan
			Jamtlands lan
United Kingdom	Yorkshire and the Humber	East Riding and North Lincolnshire	
		North Yorkshire	
		South Yorkshire	
		West Yorkshire	
	Wales	West Wales and The Valleys	
		East Wales	

General socio-economic indicators

Region	1000 inhabitants 2001	Population density(inh./Km2)2001	GDP growth 1995-2001	GDP/head EU25=100 2001	Employment rate (ages 15-64 as % of pop. Aged 15-64) 2002
Emilia-Romagna	4023	181,8	1,9	138,5	67,5
Piemonte	4291	168,9	1,3	126,3	62,0
Aquitaine	2956	71,5	3,0	103,6	61,4
Hessen	6073	287,6	2,0	135,7	67,5
Islas Baleares	810	161,6	5,3	115,7	65,8
Comunidad Valenciana	4094	175,7	4,3	89,0	60,8
Mellersta Norrland ¹	375	5,3	0,8	108,4	68,9
Yorkshire & The Humber	4967	319,1	2,1	99,7	70,5
Wales	2903	139,8	1,8	91,1	66,3
Wielkopolskie	3363	112,8	7,8	47,6	52,9

Source: European Commission - third report on economic and social cohesion 2004

Innovation indicators

Region	1.2 Population with tertiary education (% of 25-64 years age class)	1.5 Employment in high-tech services (% of total workforce)	2.1 Public R&D expenditures (GERD-BERD)(% of GDP)	2.2 Business expenditures on R&D (BERD) (% of GDP)	2.3 EPO high-tech patent applications (per million population)
Emilia-Romagna	11,77	2,85	0,46	0,50	5,6
Piemonte	9,60	4,06	0,29	1,35	10,1
Aquitaine	20,44	3,46	0,41	1,03	3,4
Hessen	24,74	4,43	0,46	1,76	22,7
Islas Baleares	16,73	1,90	0,22	0,07	1,4
Comunidad Valenciana	19,85	1,57	0,38	0,25	1,8
Mellersta Norrland	20,92	4,59	/	0,29	5,9
Yorkshire & The Humber	25,09	3,16	0,46	0,40	15,3
Wales	26,13	2,69	0,49	0,34	10,4
Wielkopolskie	/	/	/	/	/

Source: 2003 European Innovation Scoreboard: Technical Paper No 3 Regional innovation performances

ICT indicators

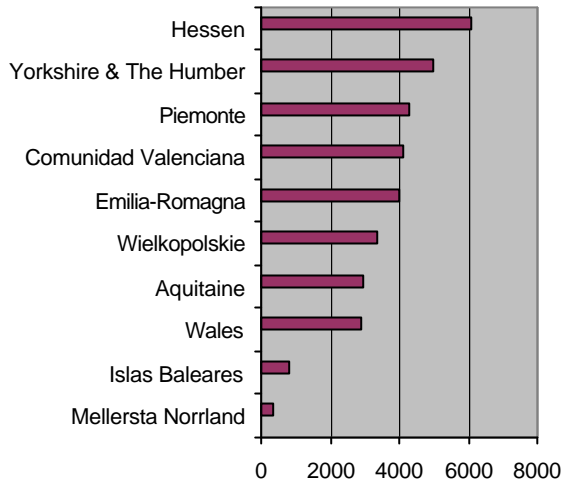
Region	Internet Access at home% (1)	N° of IST projects (2)	Those in ITCE occupations as a percentage of all employed, 1999 (%) (3)
Emilia-Romagna	34,0-41,1	149	1,2
Piemonte	26,8-33,9	227	1,4
Aquitaine	19,6-26,7	53	1,0
Hessen	26,8-33,9	134	2,1
Islas Baleares	26,8-33,9	15	/
Comunidad Valenciana	12,4-19,5	96	0,9
Mellersta Norrland	62,8-69,9	1	2,5
Yorkshire & The Humber	34,0-41,1	116	1,4
Wales	34,0-41,1	43	1,2
Wielkopolskie	/	122 (Poland)	/

Sources : (1): EU Telecoms services indicators 2002 ; (2): Cordis Database; (3): Emergence project

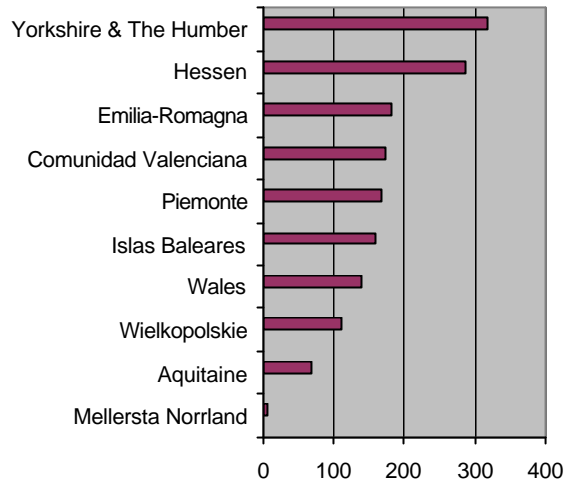
Year of the data	2003	2002	2001	2000	1999	1998	1997
------------------	------	------	------	------	------	------	------

¹ NUTS 2 , includes VasterrNorrlands

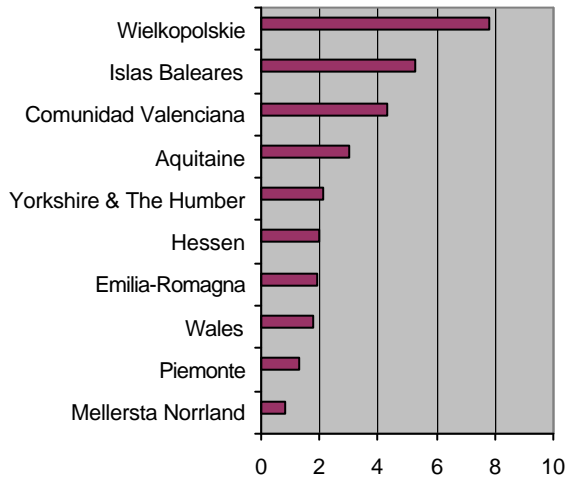
1000 inhabitants 2001



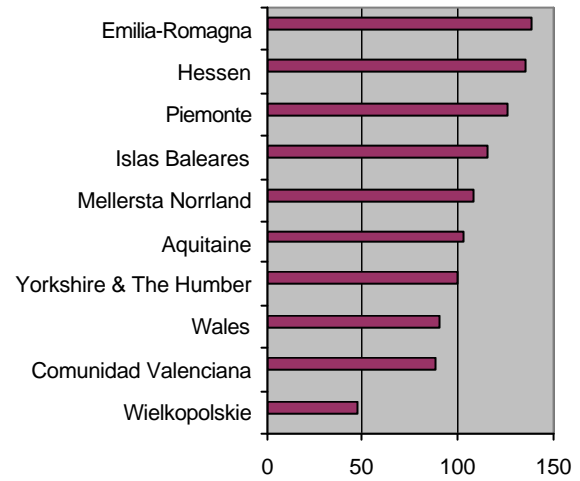
Population density (inh./Km2) 2001



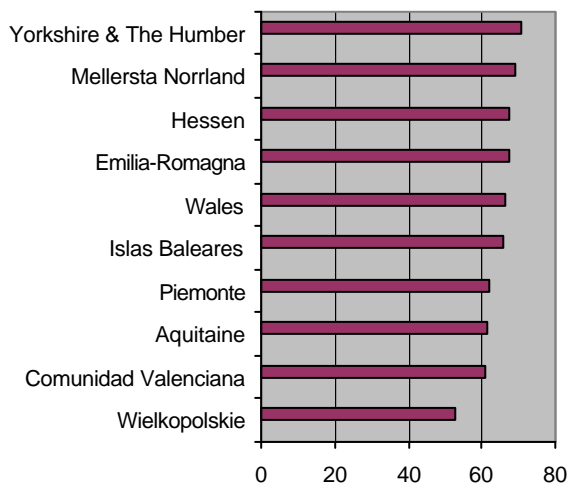
GDP growth 1995-2001



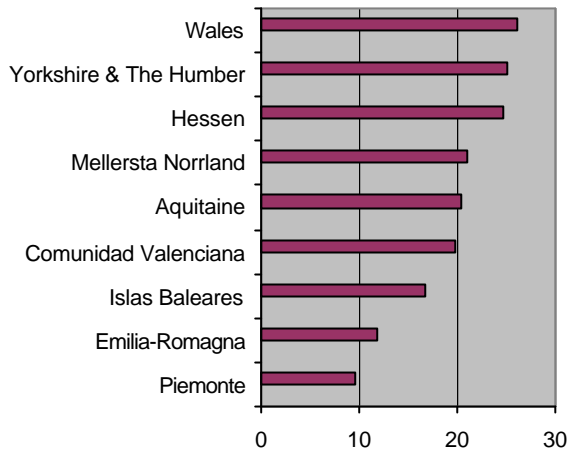
GDP/head EU25=100 2001



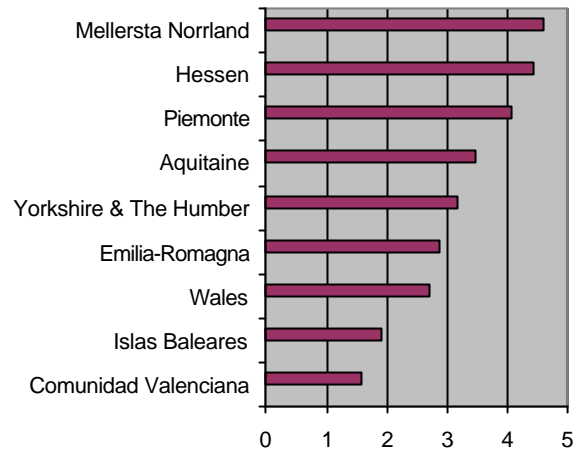
Employment rate (ages 15-64 as % of pop. Aged 15-64) 2002



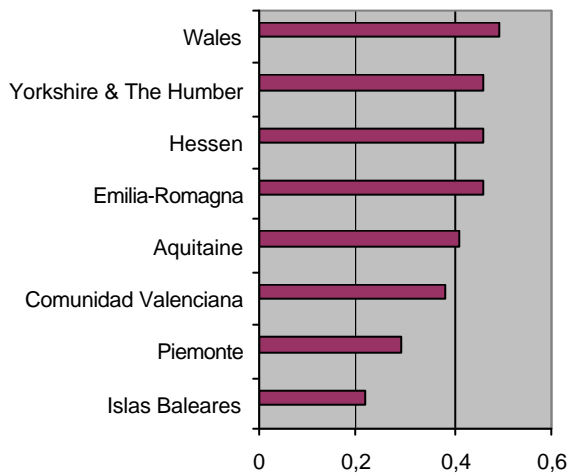
Population with tertiary education (% of 25-64 years age class)



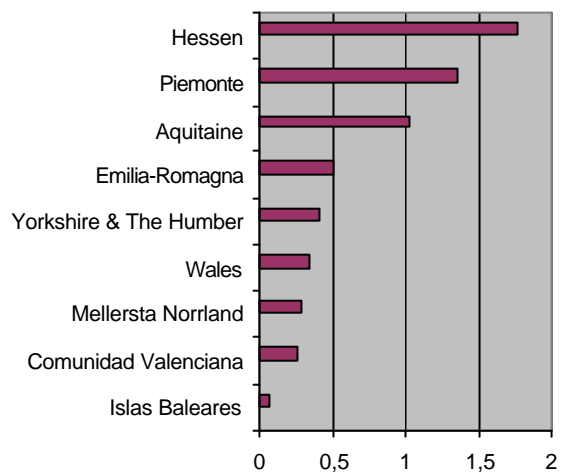
Employment in high-tech services (% of total workforce)



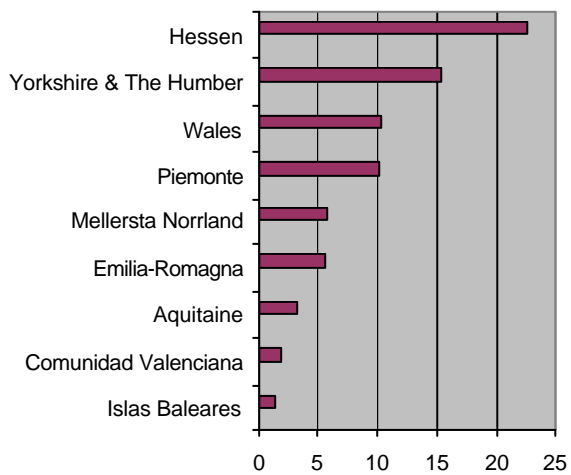
Public R&D expenditures (GERD-BERD)(% of GDP)



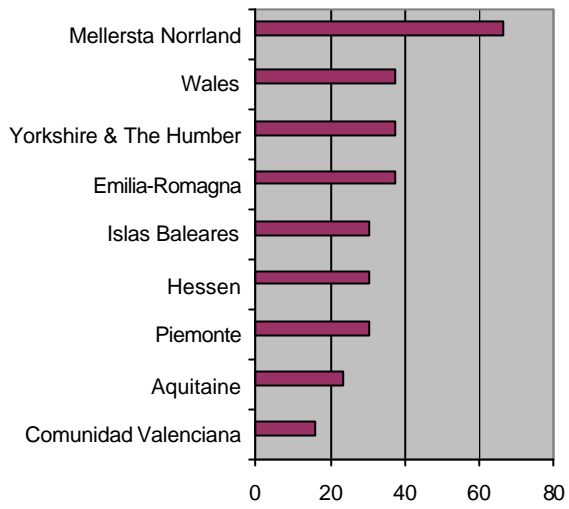
Business expenditures on R&D (BERD) (% of GDP)



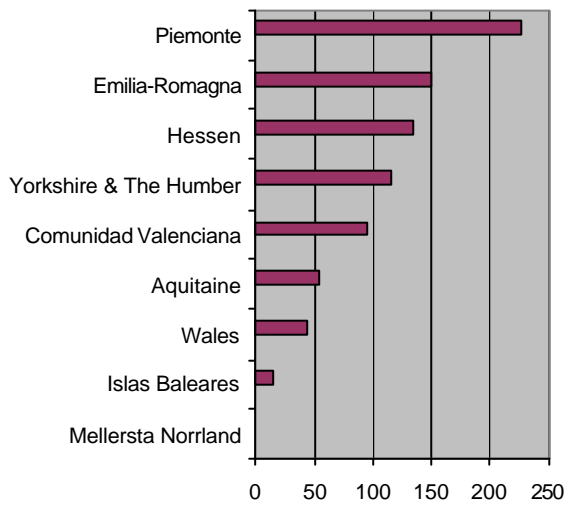
EPO high-tech patent applications (per million population)



Internet Access at home%



N° of IST projects



Those in ITCE occupations as a percentage of all employed, 1999 (%)

